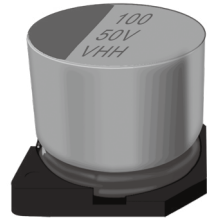


VHH Series 导电高分子混合型片式铝电解电容器 150°C 1000 小时产品

Hybrid conductive polymer. 150°C 1000 hours . For SMD Type

- 混合型电解质, 高耐压, 长寿命, 极低阻抗, 150°C.1000 小时
- 性能稳定, 可靠性高, 符合 RoHS
- 无卤对应品
- 符合 AEC-Q200
- Conductive Polymer Hybrid, high voltage, long life, low impedance, 150°C 1000 hours
- High stability and reliability. RoHS Compliant
- Halogen-free product
- AEC-Q200 Compliant

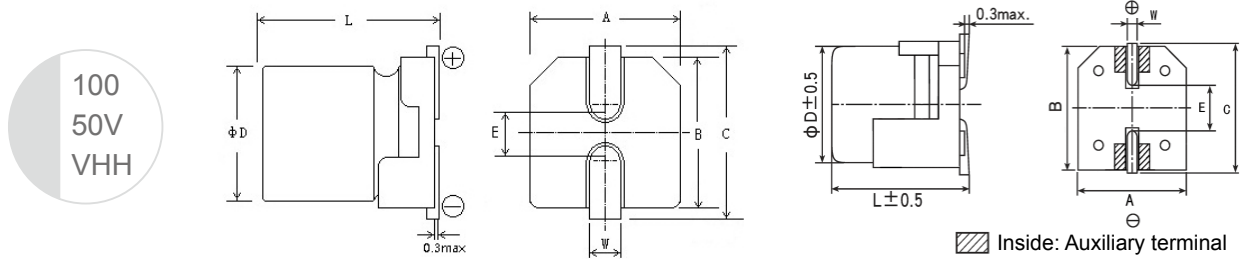
NEW

◆主要技术性能 Specifications

项目 Items	主要特性 Performance Characteristics				
使用温度范围 Operating Temperature Range	-55°C+150°C				
额定电压范围 Rated Voltage Range	16 ~ 50V DC				
标称电容量允许偏差 Capacitance Tolerance	±20% (120Hz, 20°C)				
漏电流 (20°C) Leakage Current	Rated voltage		16 ~ 50V		
	Time		2 分钟 (after 2 minutes)		
	Case Size		Φ8 ~ Φ10		
	Leakage Current		I≤0.01 CV (μA) 或 3μA 取较大者 I≤0.01 CV or 3μA whichever is greater		
损耗角正切值 (120Hz 20°C) Dissipation Factor	WV(V)	16	25	35	50
	tgδ	0.16	0.14	0.12	0.10
温度特性 (120Hz) Temperature Characteristics Impedance Ratio(100kHz)	WV(V)	16	25	35	50
	Z-25°C/ Z +20°C	1.5	1.5	1.5	1.5
	Z-55°C/ Z +20°C	2	2	2	2
耐久性 Load Life	+150°C 施加额定电压 1000 小时, 恢复 16 小时后, 电容器应满足要求 After applying rated voltage for 1000 hours ,at +150°C and then resumed 16 hours. The capacitor shall meet the following limits.				
	电容量变化率 Capacitance Change	≤ ±30% 初始测量值 ≤±30% of Initial measured value			
	漏电流值 Leakage Current	≤规定值 ≤The specified value			
	损耗角正切值 Dissipation Factor	≤ 2 倍规定值 ≤200% of the specified value			
	等效串联电阻 (ESR) Equivalent series resistance	≤ 2 倍规定值 ≤200% of the specified value			

◆外形图及尺寸 Case size table

mm



ΦD	L	$A \pm 0.2$	$B \pm 0.2$	$C \pm 0.2$	$E \pm 0.2$	W
$\Phi 8$	10.2 ± 0.5	8.3	8.3	9.1	3.1	0.9 ~ 1.1
$\Phi 10$	10.2 ± 0.5	10.3	10.3	11.1	4.5	0.9 ~ 1.1

◆标称容量、额定电压、额定纹波电流与外形尺寸对应表

Nominal capacitance, rated voltage, rated ripple current and case size table

μF	VV	16V			25V			35V			50V		
		$\Phi D \times L$ mm	I (mA)	ESR (m Ω)	$\Phi D \times L$ mm	I (mA)	ESR (m Ω)	$\Phi D \times L$ mm	I (mA)	ESR (m Ω)	$\Phi D \times L$ mm	I (mA)	ESR (m Ω)
68										8x10.2	1250	30	
100										10x10.2	1600	28	
150							8x10.2	1600	22				
220				8x10.2	1600	22							
270		8x10.2	1700	20			10x10.2	2000	20				
330					10x10.2	2000	20						
470		10x10.2	2100	18									

I ~ 额定纹波电流 Rated ripple current: (mA, 150°C, 100kHz), ESR: (m Ω , 20°C, 100kHz)